

# Andhra Pradesh Society Registration Act 2001

Registration no. 627 of 2018

Registration Date 06/09/2018

Affiliated by : NGO Darpan Niti Ayog Government Registration No - AP/2023/0349647

Affiliated by : Under IT Act 1961 Permanent Account Number- AAHAA9988R

Affiliated by : Under the 12 AA IT ACT 1961 Unique Registration Number - AAHAA9988RE20231

Affiliated by : Under the IT ACT 1961 80G Unique Registration Number - AAHAA9988RF20231

Affiliated by : Under the CSR 1 Ministry of Corporate Affairs Govt.of India - CSR00057917

## Annual Report for April 2022 - March 2023



### Arohan Tribal Society

**Surekha Patnaik - Founder President**

Contact No: 8099911415 / 9899966012 ;

Email : arts6271018@gmail.com

Website : [www.arohantribalsociety.com](http://www.arohantribalsociety.com)



# **Our Founders Message,**

**My vision is to build a society where every child has equal access to quality education and every individual has the opportunity to succeed, with a particular emphasis on empowering the youth and women in rural tribal regions of India. By implementing sustainable initiatives and impactful programs, we aim to promote growth, enhance health, and uplift tribal communities, creating lasting positive change in their lives.**

## **Our Vision**

**Tribal Society (ArTS) is an initiative dedicated to contribution towards equal rights and opportunities for “Learning and Empowerment” amongst the Tribal youth and women, with an enhanced focus on “Self-sustainment and Recognition of the Tribal communities in India. Our Vision is to provide equal rights and opportunities by driving a transformative & effective change in a holistic manner in the lives of the Tribal Communities. We aspire to empower them to reach their full potential and contribute meaningfully to society. We ensure to provide a special attention towards creating a Healthy Harmonious culture, better living standard & an effective Healthcare, while ensuring unlimited access to Education & Skill development side by side.**

# EDUCATION-BASED PROGRAMS

## Ensuring All Children are in School and Learning

- **Focus on Abilities, Not Location:** The primary emphasis should be on students' capabilities and learning needs, rather than their geographic remoteness.
- **Collaborative Teaching Approach:** General and special education teachers should work collaboratively to educate, support, and motivate all students.
- **Universal Curriculum Design:** The curriculum should be aligned with Universal Design for Learning (UDL) principles to accommodate diverse learning needs and styles.

**Inclusive Education: Expanding Real Learning Opportunities**

## INCLUSIVE EDUCATION

### **Expanding Real Learning Opportunities**

Inclusive education ensures meaningful learning opportunities for groups that have historically been marginalized. Key considerations for promoting inclusive education among tribal children include.



Arohan Tribal Ecology




Arohan Tribal Ecology

- **Cultural and Linguistic Recognition:** The education system must respect and integrate tribal culture, language, cognitive strengths, and the traditional learning patterns of tribal communities.
- **Addressing Infrastructure Gaps:** Schools in tribal areas often lack adequate infrastructure, including teaching and learning materials, which hampers the educational experience.
- **Language Barriers:** Language remains a significant challenge in tribal education, as the medium of instruction often does not match the learners' native tongue.





- **Teacher Absenteeism:** High rates of teacher absenteeism in remote tribal regions significantly undermine the quality of education.
- **Parental Attitudes:** Education is often undervalued by tribal parents due to the lack of immediate economic benefits, leading to a preference for engaging children in income-generating activities.
- **Geographical and Economic Isolation:** Tribal communities are frequently isolated, facing a lack of communication facilities, poor economic conditions, and superstitious beliefs, all of which hinder educational access and participation.
- **Impact of Early Childhood Circumstances:** Early childhood conditions have a profound impact on the long-term educational outcomes of tribal children, influencing their learning and overall well-being in later years.



# Women Entrepreneurship & Empowerment

**"When women work, economies thrive."**

Women's economic empowerment enhances productivity, fosters economic diversification, and promotes income equality, leading to broader positive development outcomes.

## Key Points:

- **Boosting Economic Growth:** Empowering women economically leads to increased productivity and more equitable income distribution.
- **Role of Education:** Enhancing educational attainment for women and girls significantly contributes to their economic empowerment and drives inclusive economic growth.
- **Continuous Learning and Skill Development:** Providing opportunities for upskilling and reskilling throughout life is crucial, especially in the context of rapid technological advancements and digital transformations reshaping the job market.





# Awareness Session Visit to Mallipadu Village in G. Madugula

A visit was conducted to Mallipadu village in G. Madugula to hold an awareness session with the villagers





# HEALTHCARE & SANITATION PROGRAMME



Our teams collaborated closely with local healthcare workers to ensure the seamless distribution of essential medicines, prioritizing the most remote and underserved areas. This initiative required meticulous planning and unwavering commitment to ensure that, no one in the Tribal community was left without access to crucial healthcare resources. Through these continuous efforts, we were able to safeguard the health of countless families, providing them with essential support and reassurance during this challenging time.



# The Rotary Club of Visakha Pearl City, District 3020, distributed school bags.



Arohan

# NUTRITIONAL WEEK IN SCHOOLS



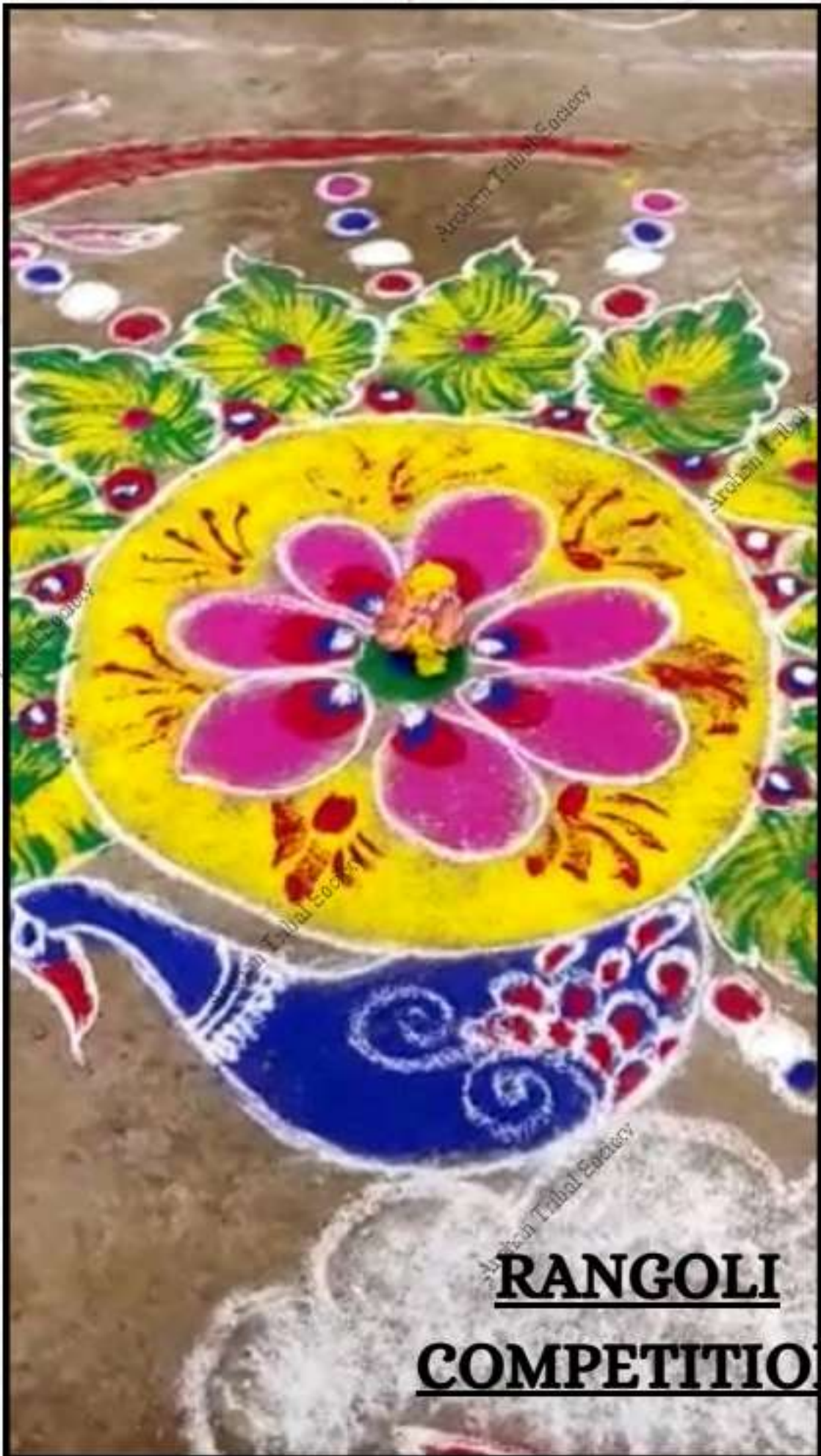
Arohan Tribhuvan

# PONGAL CELEBRATION

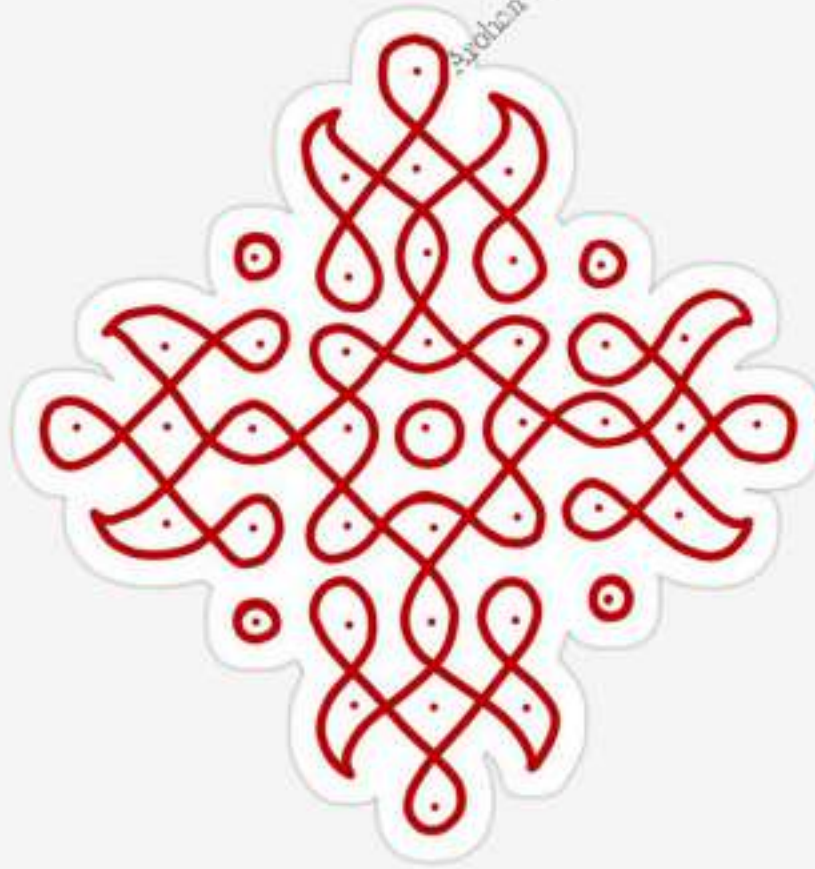
During the Pongal festival in January, L. Kotapalli schools host vibrant Rangolis, where students eagerly showcase their creativity and artistic skills. These events, held in the school courtyard or playground, feature traditional designs like floral patterns and geometric shapes. Women use natural colors and flowers to enhance the authenticity of their Rangolis.

The competition fosters teamwork, cultural appreciation, and creativity, while also allowing students to express their understanding of the festival's significance.





**RANGOLI**  
**COMPETITION**



**Thank You**